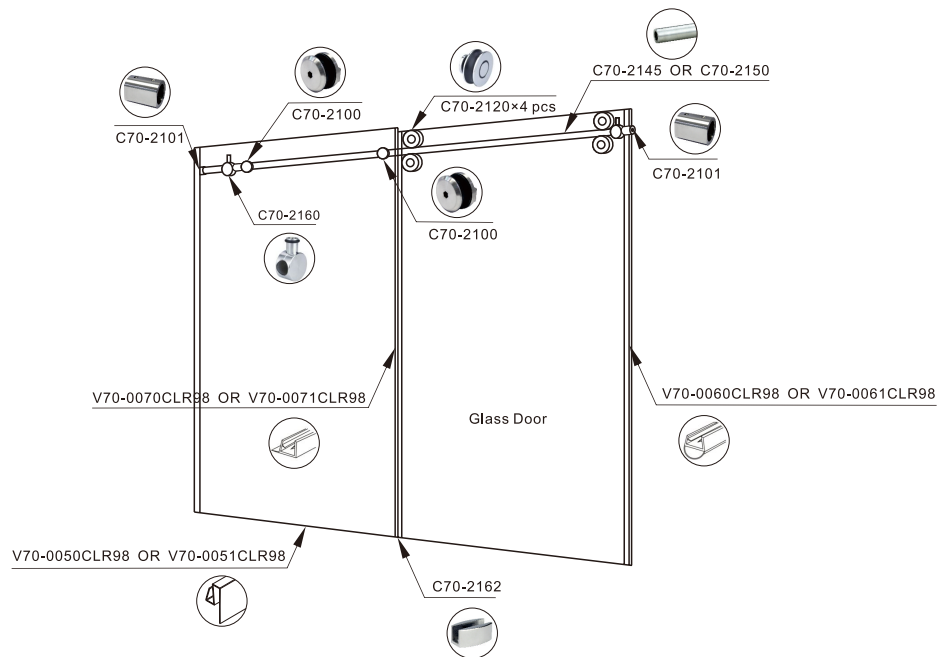




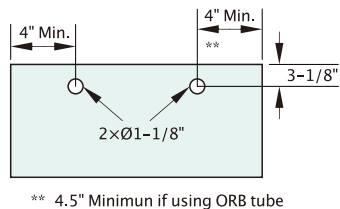
TRANQUILITY GLIDING SHOWER DOOR SYSTEM



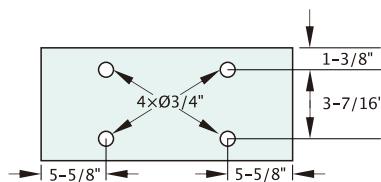
TRANQUILITY GLIDING SHOWER DOOR SYSTEM GLASS CUTOUT GUIDE



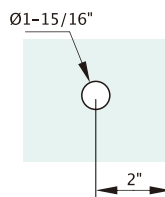
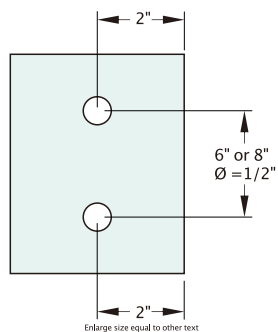
Fixed Panel



Sliding Panel / Roller Placement



Handle Options



Round Handle

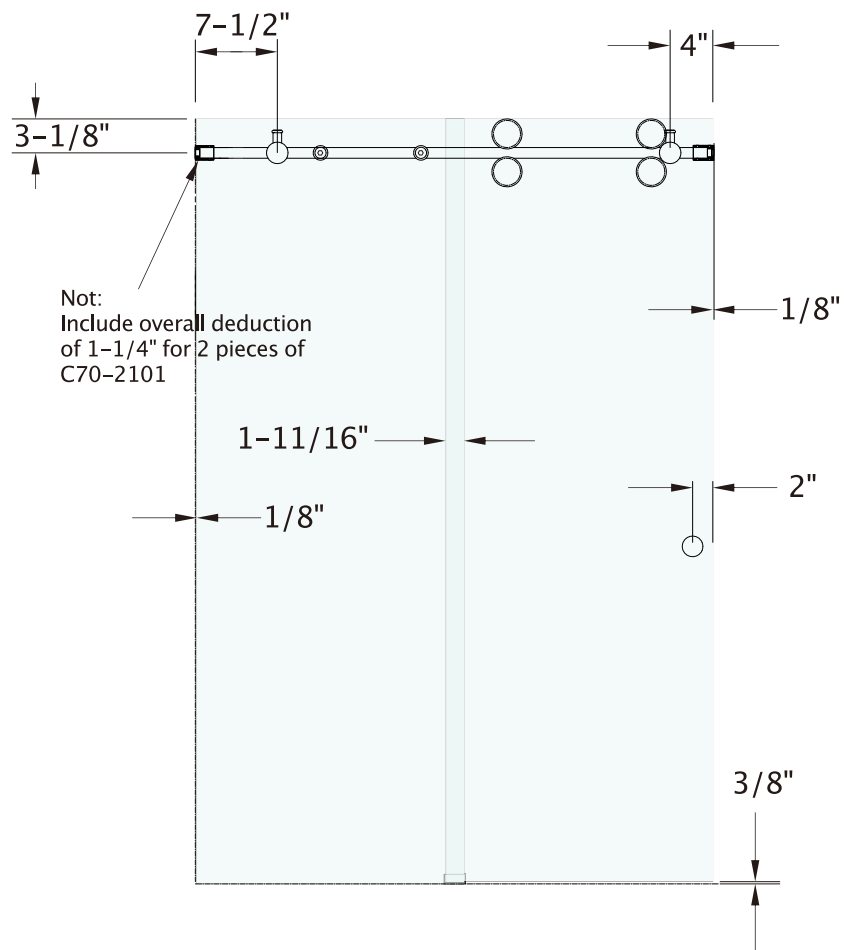
Glass Sliding Door Data

Safety glass thickness: 3/8" to 1/2"
 Maximum glass door weight: 220lbs
 Maximum sliding door width: 39-3/8"
 Maximum sliding door height: 88"

Glass Size Cutting Formula

Width of fixed panel glass = overall width divided by 2 plus 1-11/16"
 Width of sliding door glass = overall width divided by 2
 Height of fixed panel glass = overall height minus deduction for U clamp or channel
 Height of sliding door glass = overall height minus 3/8"

TRANQUILITY GLIDING SHOWER DOOR SYSTEM GLASS CUTOUT GUIDE



Note:
 $1/8"$ side deduction needed if using side gaskets

TRANQUILITY GLIDING SHOWER DOOR SYSTEM

INSTALLATION INSTRUCTIONS

Notes:

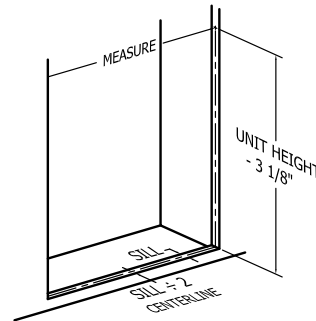
This is a two person installation.

All marks made on tile, marble or fiberglass should be made lightly in pencil so they can be removed after the installation is complete.

An optional method is to use masking tape on the walls and sill that can be removed as the installation progresses.

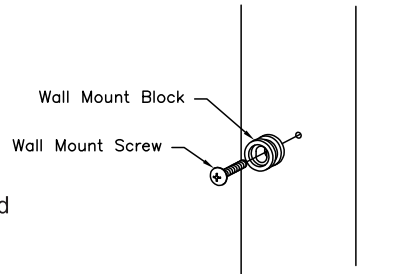
STEP 1

Establish centerlines – The centerlines of the unit must be established on the shower sill and on the walls. Measure the width of the shower sill and mark the centerline down the middle. Transfer the centerline to the walls using a level. Mark header bar location at 3 1/8" less than the unit height, on the centerline. Measure, and write down, the distance between the two wall mount marks.



STEP 2

Bar mount – Drill wall anchors fully into the holes. Place the wall mount blocks against the wall with the counter bore to the middle of the enclosure. Using the 2" philips head screws, attach the wall mount block to the wall, with the slot in a vertical position and the screw centered in the block.



STEP 3

Bar length-Wall plate deduction 1-1/4" (2x5/8")

When using an un-drilled tube, simply cut to desired length before marking and drilling holes for the tube glass fixed connector. If using 2 piece ORB tubing, the following steps need to be taken in order to achieve proper length and alignment:

1) Assemble the tube using the supplied connector.

** Make note of the location within the tube occupied by the long (4") side of the connector.

2) Cut equal amounts from each side of the tube to achieve desired length.

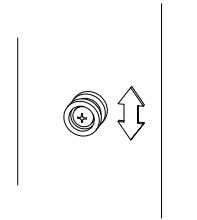
3) Be sure to align the tube so that the longer (4") side of the connector is pointing toward the sliding panel. In other words, the holes for the fixed panel tube mounts will be drilled on the same side of the tube as the short (2") connector.

Important: If using a pre-drilled tube, additional steps will be needed to insure proper alignment. Please consult Morse Industries for product support if necessary.

STEP 4

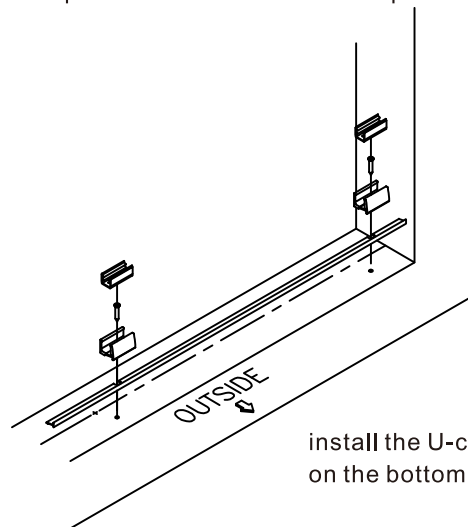
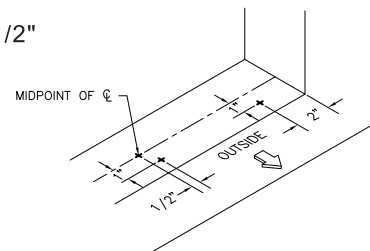
Level the bar – Temporarily place the wall mount sleeves on each end of the header bar. Align the header bar with the wall mount block, and slide the wall mount sleeves over the wall mount blocks. Place a level on the center of the header bar and check for level. If needed the wall mount blocks can be raised, or lowered. Once leveled, remove the header bar from the wall mount blocks, and the wall mount sleeves from the header bar.

Note: A slight downward tilt on the door side of the header bar will help keep the door in the closed position while in use. A downward tilt on the fixed panel side will cause the door to open, allowing water leakage.



STEP 5 (OPTIONAL)

Glass clips and threshold – Mark the center point of the sill, along the centerline, established in step one. Make a mark 1/2" over toward the fixed panel side and 1" outside of the centerline. Drill a screw hole on the floor to install the U-channel or glass clamp on the bottom for the fixed panel

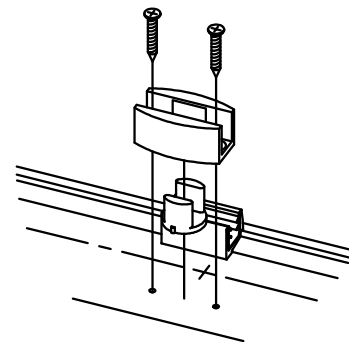
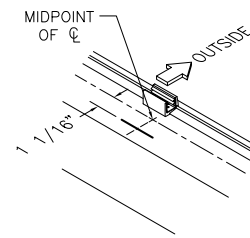


install the U-channel or glass clamp on the bottom for the fixed panel

* Clamps and U-channel sold separately

STEP 6

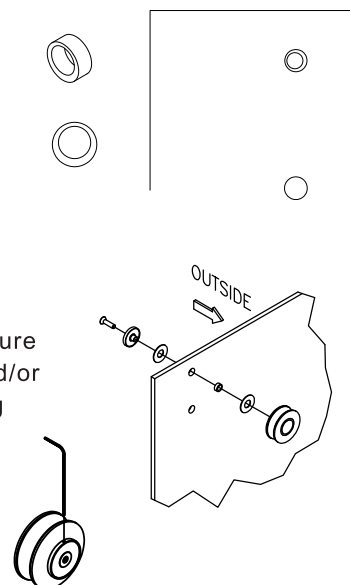
Center guide – At the middle of the centerline, make a mark approximately 2" long and 1 1/16" to the inside of the enclosure. Place the center guide on the new mark, centered on the middle of the centerline. Mark the center of the attachment holes and, remove the center guide. Drill two 5/16" holes at the marked locations. Clean the area around the holes and put a little silicone into each hole. Press the center guide anchors into the holes until the lip is flush with the sill. **IMPORTANT:** Make sure that the lobe on the center guide insert is engaged with the proper slot in the center guide, as shown. Mount the center guide with the center guide screws.



Note - please inform your Morse Industries rep if using 1/2" glass for additional information and/or instructions

STEP 7

Door Panel – Notice that the glass insert that is used when mounting the rollers to the door glass has an offset center hole. Mount the top rollers to the glass with the offset holes in the glass insert to the left or right of the mounting holes. That will allow a slight vertical adjustment later. Make sure that there is a plastic washer on either side of the door glass. Tighten the rollers down with the roller screw through the roller backing plate. Install your handle option at this time. Place the door glass inside the shower enclosure with the rollers facing out and the handle so that it is on the side of the enclosure that the door will strike against. **CAUTION:** Make sure that you set the door glass on something so that the glass and/or the floor of the enclosure is not damaged. Cardboard packing material works fine.



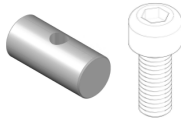
STEP 8

Drill Tube

- 1) Mark hole location to match glass cut out
- 2) Drill two 5/16" holes through the outer wall of the tube. Use of a Drill Rite Jig available from Morse Industries is recommended.

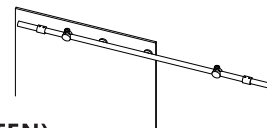
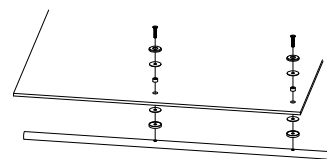


- 3) Slide barrel nut down the center of the tube until threads are aligned with holes.



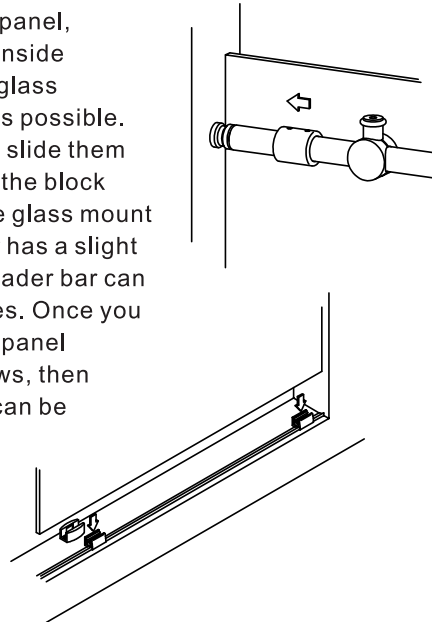
- 4) Continue mounting the tube as described below.

Load the Bar – Place the fixed panel on a flat surface with the mounting holes hanging off the edge, and the inside of the panel facing down. Place the header bar on the fixed panel with the holes facing up. Using a thin rod, or straightened wire coat hanger, push the glass mount threaded pins into the end of the header bar and line one up with each hole in the bar. Put a glass mount plastic washer on the outer glass mount and put the flat head screw through them both and set the sub-assembly aside. Repeat for the other hole. Carefully, move the bar below the glass panel and line the middle hole of the bar up with the hole located 1 1/2" from the edge of the fixed panel. Put an inner glass mount and a plastic washer over the center hole on the header bar and line it up with the hole closest to the edge of the glass panel. Place the glass insert into the hole and take one of the outer glass mount sub assemblies and thread the screw into the threaded rod inside the header bar (**DO NOT TIGHTEN**). Do the same for the other glass mount. Place a stopper on both ends of the header bar with the rubber o-ring on what will be the top of the shower, and slide it toward the middle and snug the set screw (**DO NOT TIGHTEN**). Slide a wall mount sleeve on both ends of the header bar with the flat facing the end of the bar, and snug one set screw (**DO NOT TIGHTEN**).



STEP 9

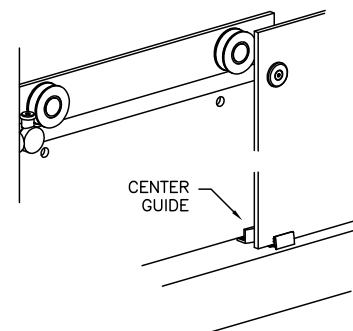
Fixed Panel Installation-Preparing to install the fixed panel, orient the fixed panel glass with the open end to the inside of the enclosure. Lift the fixed panel and set it in the glass clips or U-channel with the edge as tight to the wall as possible. Loosen the set screws in the wall mount sleeves and slide them over the wall mount blocks. Snug the set screws into the block (DO NOT TIGHTEN). Loosen, but do not remove, the glass mount screws and make sure the header bar is still level, or has a slight tilt toward the door side. Small adjustments in the header bar can be made with the set screws in the wall mount sleeves. Once you have the header bar set as you want it, and the fixed panel positioned correctly, tighten the wall mount set screws, then the glass mount screws. A small amount of silicone can be used between the glass and wall for water proof.



Set the fixed panel in the glass clips or U-channel

STEP 10

Door Panel Installation – Lift the door glass and place the rollers on the bar, making sure to get the bottom edge of the door glass into the center guide. To adjust the rollers up or down, the door glass will have to be removed and the rollers taken off. Rotate the glass insert to move the off-center hole to the top or bottom of the hole in the door glass. Rotating the glass insert to the bottom position will raise the door glass, rotating it to the top will lower it. Reinstall the door glass and rollers if necessary. Install the rollers that go under the header bar, adjusting them so that they are as close to the bottom of the bar as possible.

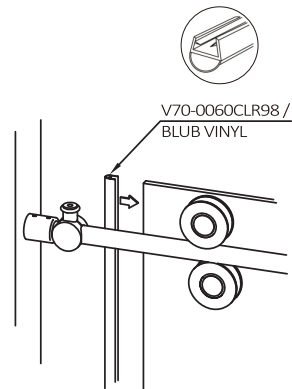
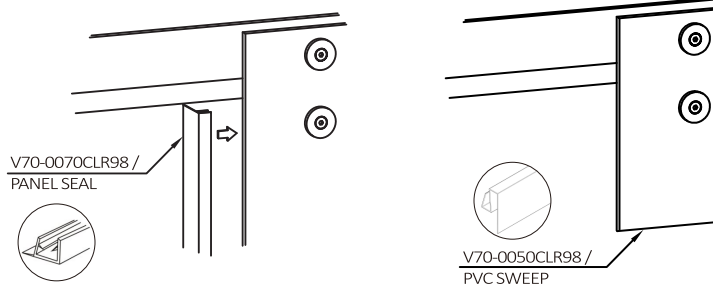


STEP 11

Seal Installation –

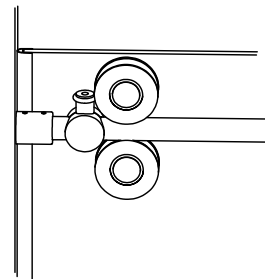
1. Cut the bulb vinyl seal to the vertical length of your door glass.
2. Cut the panel seal to the length of the door glass minus 4".
3. Cut the PVC sweep V70-0050 to the vertical length of your glass door
4. Press the bulb vinyl seal on the strike side of the door glass; the panel seal on the other side of the door glass and press the PVC sweep V70-0050 on the bottom side of the glass door.

A small amount of silicone can be used between the glass and seal if you like.



STEP 12

Set the stops – Move the door to the closed position. Slide the stopper over until it touches the top roller on the strike side of the door. Tighten the stopper set screw with the bumper in the up position. Move the door to the open position with the handle 1/4" - 1/2" from hitting the fixed panel. Slide the other stopper over until it just touches the top roller on the fixed side of the door. Tighten the stopper set Screw with the bumper in the up position.



STEP 13

Finishing Up – Make sure that all fasteners are tight. Clean all exposed marks you made on the sill and walls of the shower stall. Clean the glass panels.

STEP 14

Allow 24 hours for any silicone to completely cure, before using your new Morse Tranquility Gliding Shower Door System.