



PRECISION LOCK™ ADJUSTABLE RAILING

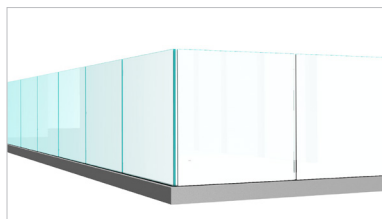
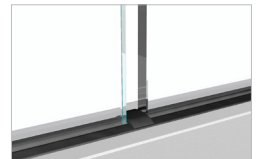
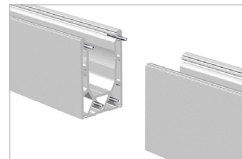
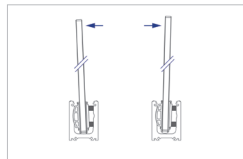
Precision Lock™ Adjustable Railing is the latest innovation in glass railing. Allowing the installer to adjust the glass for plumb quickly and easily with no specialized tools, this product provides the best solution to the real-world installation conditions encountered at all construction sites.

With a full range of top rails, hand rails, fasteners, drain blocks, and cladding you can count on Morse Industries to help make your next glass railing job fast and profitable.



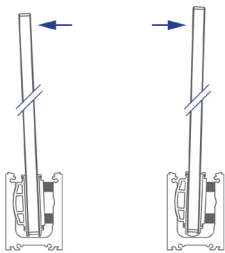
PRODUCT FEATURES

- Extruded from 6063 T6 Aluminum
- Over 2" of adjustment to plumb glass
- Accommodates 1/2" to 1" Glass
- Patented rotating pressure plate
- Available in all popular drilling patterns
- Fully engineered



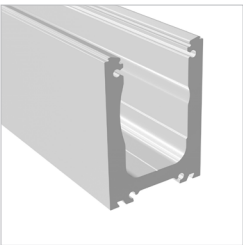
PRECISION LOCK™ DRY GLAZED SHOES

With two standard shoes and three mechanisms to choose from, Precision Lock Adjustable Railing can be configured to work with both laminated and monolithic glass in thicknesses from 1/2" to 1".



PRECISION LOCK MODEL 68 BASE SHOE

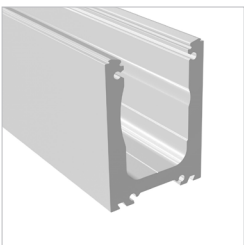
2 - 3/4" wide x 4 - 1/8" tall, for use with 1/2" to 11/16" monolithic or laminate glass.



PRECISION LOCK
68 SHOE - 10 FT.
UNDRILLED

For 1/2" to 11/16" (12.6 to 17.52mm) monolithic or laminated tempered glass, 10 foot lengths, undrilled, mill finish.

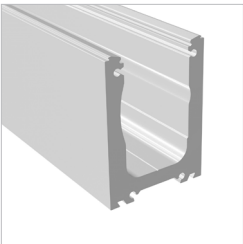
Part #: A42-PL68MF10



PRECISION LOCK
68 SHOE - 10 FT.
COUNTERBORED

For 1/2" to 11/16" (12.6 to 17.52mm) monolithic or laminated tempered glass, 10 foot lengths, counterbored, mill finish.

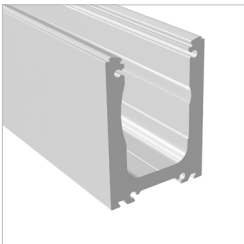
Part #: A42-PL68MFCB



PRECISION LOCK
68 SHOE - 20 FT.
UNDRILLED

For 1/2" to 11/16" (12.6 to 17.52mm) monolithic or laminated tempered glass, 20 foot lengths, undrilled, mill finish.

Part #: A42-PL68MF20



PRECISION LOCK
68 SHOE - 20 FT.
COUNTERBORED

For 1/2" to 11/16" (12.6 to 17.52mm) monolithic or laminated tempered glass, 20 foot lengths, counterbored, mill finish.

Part #: A42-PL68MF20CB

PRECISION LOCK MODEL 68 MECHANISMS

For use with model 68 base shoe, configured to fit glass thicknesses from 1/2" - 11/16".



PRECISION LOCK
68 MECHANISM
1/2" to 17/32" GLASS

For 1/2" to 17/32" Glass (12-12.76mm and 13.52mm).

Part #: M42-PL68B-4



PRECISION LOCK
68 MECHANISM
9/16" GLASS

For 9/16" Glass (14.28mm to 15mm).

Part #: M42-PL68D-4



PRECISION LOCK
68 MECHANISM
11/16" GLASS

For 11/16" Glass (16.76mm -17.52mm).

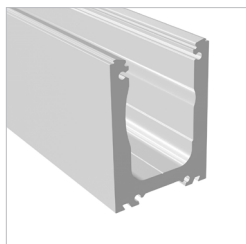
Part #: M42-PL68E-4

Part #	Glass Size	Gasket A	Gasket B
A42-PL68	10mm	V11-PLG1BK20	V11-PLG25BK20
	1/2" Temp. (12 - 12.76mm)	V11-PLG1BK20	V11-PG17BK20
	17/32" (13.52mm)	V11-PLG1BK20	V11-PLG15BK20
	9/16" (14.28 - 15mm)	V11-PLG1BK20	V11-PLG15BK20
	5/8" (15.87mm)	V11-PLG2BK20	V11-PLG17BK20
	11/16" (16.76 - 17.52mm)	V11-PLG2BK20	V11-PLG15BK20

Gasket Table for 68 Base Shoe.

PRECISION LOCK MODEL 80 BASE SHOES

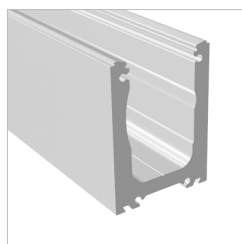
3 - 5/32" wide x 4 - 1/8" tall, for use with 11/16" to 1" monolithic or laminate glass.



PRECISION LOCK 80 SHOE - 10 FT. UNDRILLED

For 11/16" to 1" (17.52 to 25.52mm) monolithic or laminated tempered glass, 10 foot lengths, undrilled, mill finish.

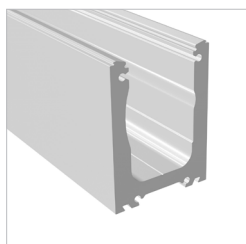
Part #: A42-PL80MF10



PRECISION LOCK 80 SHOE - 10 FT. COUNTERBORED

For 11/16" to 1" (17.52 to 25.52mm) monolithic or laminated tempered glass, 10 foot lengths, counterbored, mill finish.

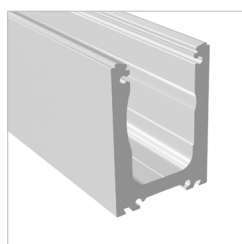
Part #: A42-PL80MF10CB



PRECISION LOCK 80 SHOE - 20 FT. UNDRILLED

For 11/16" to 1" (17.52 to 25.52mm) monolithic or laminated tempered glass, 20 foot lengths, undrilled, mill finish.

Part #: A42-PL80MF20



PRECISION LOCK 80 SHOE - 20 FT. COUNTERBORED

For 11/16" to 1" (17.52 to 25.52mm) monolithic or laminated tempered glass, 20 foot lengths, counterbored, mill finish.

Part #: A42-PL80MF20CB

PRECISION LOCK MODEL 80 MECHANISMS

For use with model 80 base shoe, configure to fit glass thicknesses from 11/16" to 1".



PRECISION LOCK 80 MECHANISM 11/16" GLASS

For 11/16" Glass (16-17.52mm).

Part #: M42-PL80D-4



PRECISION LOCK 80 MECHANISM 3/4" GLASS

For 3/4" Glass (19mm).

Part #: M42-PL80E-4



PRECISION LOCK 80 MECHANISM 27/32" GLASS

For 27/32" Glass (21.52mm).

Part #: M42-PL80F-4



PRECISION LOCK 80 MECHANISM 1" GLASS

For 1" Glass (25.52mm).

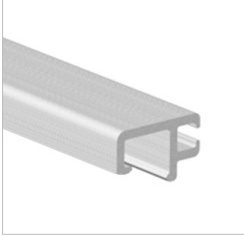
Part #: M42-PL80G-4

Part #	Glass Size	Gasket A	Gasket B
A42-PL80	9/16" (15mm)	V11-PLG17BK20	V11-PLG25BK20
	11/16" (16 - 17.52mm)	V11-PLG17BK20	V11-PG17BK20
	3/4" Temp (19mm)	V11-PLG1BK20	V11-PLG25BK20
	13/16" & 27/32" (20.52 - 1.52mm)	V11-PLG1BK20	V11-PLG17BK20
	1" (24.76 - 25.5mm)	V11-PLG2BK20	V11-PLG17BK20

Gasket Table for 80 Base Shoe.

SNAP ON GASKET EXTRUSIONS

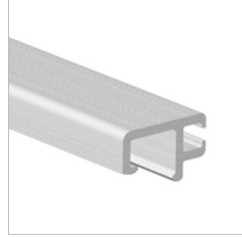
Paired with our selection of compressible gaskets, these extrusions make it simple to get a tight seal between the glass and the shoe. Extrusions are designed to work with both model 68 and model 80 base shoes. Optional cladding fits over the top for a perfect finished look.



SNAP ON GASKET EXTRUSIONS - 10 FT.

Snap on gasket extrusion profile, mill finish, for use with models 68 & 80 base shoes, 10 foot length.

Part#: A16-PL68SOMF10



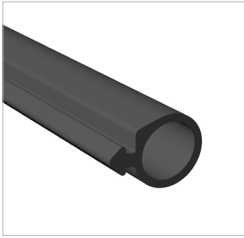
SNAP ON GASKET EXTRUSIONS - 20 FT.

Snap on gasket extrusion profile, mill finish, for use with models 68 & 80 base shoes, 20 foot length.

Part#: A16-PL68SOMF20

COMPRESSIBLE GASKETS

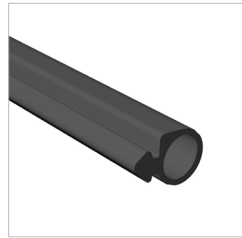
Compressible gaskets work in tandem with the gasket extrusion to make a perfect seal between the glass and shoe. Can be configured to seal glass thicknesses between 1/2" & 1".



COMPRESSIBLE CLOSURE GASKET - 20 FT.

Please reference the Gasket Tables on pages 2 & 3 to align with your base shoe + glass combinations.

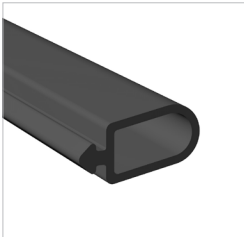
Part #: V11-PLG1BK20



COMPRESSIBLE CLOSURE GASKET - 20 FT.

Please reference the Gasket Tables on pages 2 & 3 to align with your base shoe + glass combinations.

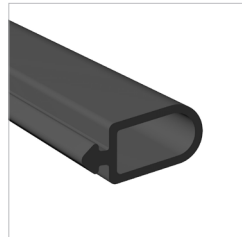
Part #: V11-PLG2BK20



COMPRESSIBLE CLOSURE GASKET - 20 FT.

Please reference the Gasket Tables on pages 2 & 3 to align with your base shoe + glass combinations.

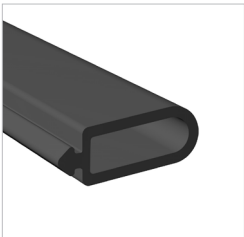
Part #: V11-PLG15BK20



COMPRESSIBLE CLOSURE GASKET - 20 FT.

Please reference the Gasket Tables on pages 2 & 3 to align with your base shoe + glass combinations.

Part #: V11-PLG17BK20



COMPRESSIBLE CLOSURE GASKET - 20 FT.

Please reference the Gasket Tables on pages 2 & 3 to align with your base shoe + glass combinations.

Part #: V11-PLG25BK20



19MM RATCHETING WRENCH

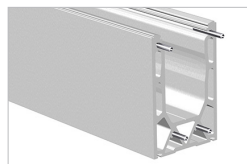
For locking patented mechanisms in place.

Part #: T42-PLRW

WELD & DRAIN BLOCKS



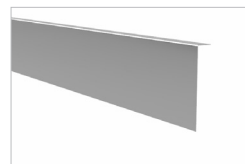
PERFECT ALIGNMENT PINS



ATTACHMENT HARDWARE



CLADDING



TOP RAIL

