



## MATTE BLACK FINISH

The popularity of matte black finish is growing quickly in architectural and commercial design. It can be used to create a host of modern, sophisticated looks that are easily maintained. As a result, Morse Industries is proud to announce that we are now stocking some of our most popular items in matte black finish.

### PRODUCT FEATURES

- Durable anodized or electroplated finish
- In stock for immediate shipment
- Available on our most popular items
- Priced competitively
- Matches finish from many fixture manufacturers
- In demand by architects and designers



# MATTE BLACK FINISH

## SHOWER HINGES

Standard & Heavy Duty Square Edge Wall Mount Full Back Plate Hinges.



C50-0004  
C50-0011

## SHOWER PULL

8" Back-to-Back Shower Door Pull (with removable washers).



C60-0008

## SHOWER CLAMP

Heavy Duty Square Edge Hole-In-Glass Style Wall Mount Clamp.



C50-0033

## TOWEL BAR

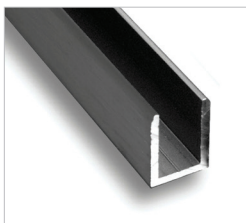
20" & 24" Towel Bar.



C60-0021 • C60-0023

## SHOWER CHANNEL

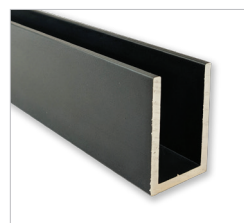
3/4" Deep Shower U-Channel for 3/8" Glass.



A52-0221

## COMMERCIAL CHANNEL

1" x 1", 1" x 1 - 1/2", & 1" x 2" Commercial Channels.



A40-1101  
A40-1306  
A40-1402