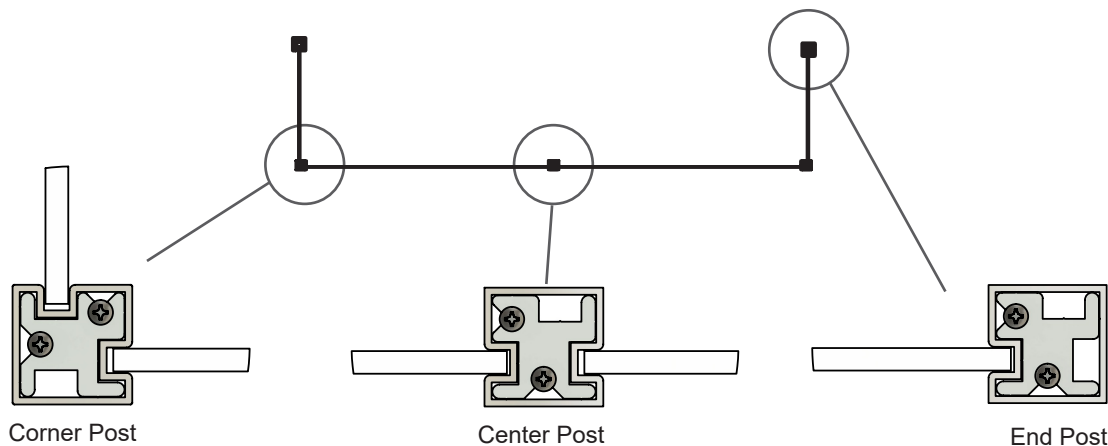




PARTITION POST SAFETY SHIELD

Morse Industries is excited to supply Partition Post Safety Shield Systems. Tell us about your space and we will design a system to fit your needs.

Since 1982 industry professionals have relied on Morse Industries for top quality railing, extrusion, fixture, shower, and other architectural hardware. Contact our knowledgeable customer service representatives to get expert advice and recommendations on the perfect solution for your needs.

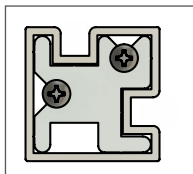
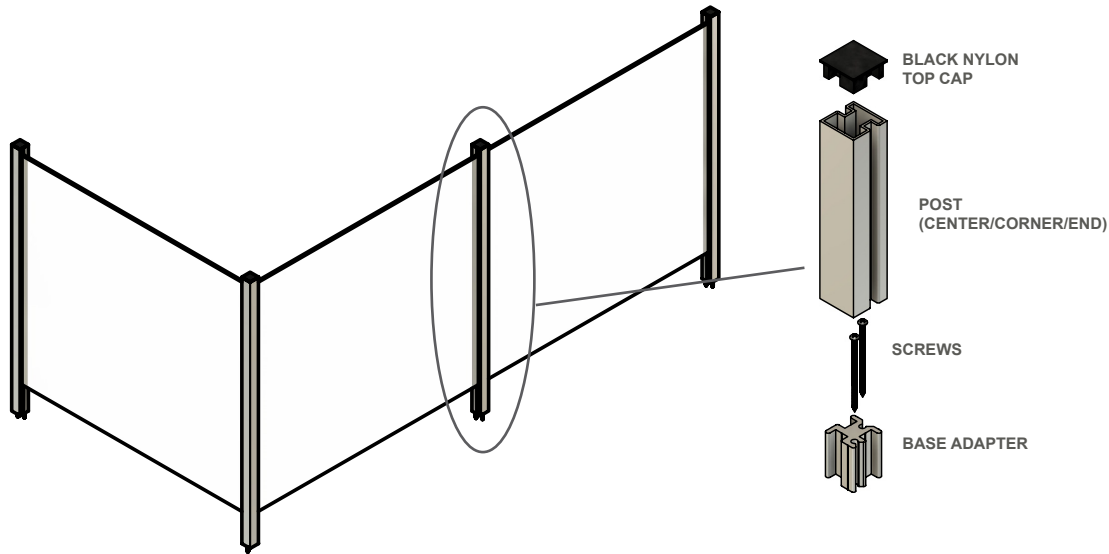


WWW.MORSEINDUSTRIES.COM | 800.325.7513

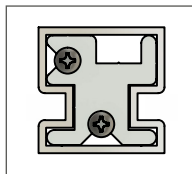


PARTITION POST SAFETY SHIELD

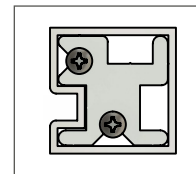
The Partition Post Shield not only provides the ability to pass money and small objects below the infill if needed, but can also be mounted with the infill flush to the surface so no gap remains. The posts on this shield are made of high-quality extruded aluminum components. The shield works with a variety of infill material, accommodating a thickness of 1/4". No fabrication is needed on the infill material.



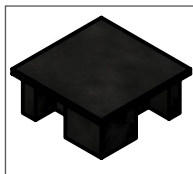
CORNER POST
PART #: A55-1000



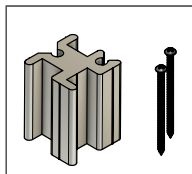
CENTER POST
PART #: A55-2000



END POST
PART #: A55-3000

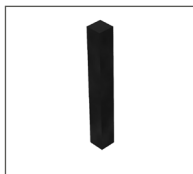


BLACK NYLON TOP CAP
PART #: A55-4000



BASE ADAPTER
(2) SCREWS REQUIRED
PER BASE (Included)
PART #: A55-5100

Recommended Accessories



GLASS SETTING BLOCK
PART #: V55-1000
For adjusting gap
under infill



**GORILLA SUPER
GLUE**
PART #: G55-1000
For attaching posts,
top cap, and setting
block



SHEET METAL SCREW
PART #: A55-6500
For locking post to base

Available in Super Satin Anodized • Custom Finishes also Available

WWW.MORSEINDUSTRIES.COM | 800.325.7513



Northwest Distribution Facility
Morse Industries Headquarters
25811 74th Avenue South
Kent, WA 98032

Southwest Distribution Facility
Morse Industries
3080 Enterprise Avenue, Suite A Brea,
CA 92821

Central U.S. Distribution Facility
Morse Industries
4041 N. Santa Fe Ave.
Oklahoma City, OK 73118

Mid-Atlantic Distribution Facility
Morse Industries
1630 Old Dunbar Road
West Columbia, SC 29172